



HEALTHCARE

[Go to Nursing Pathways Page](#)

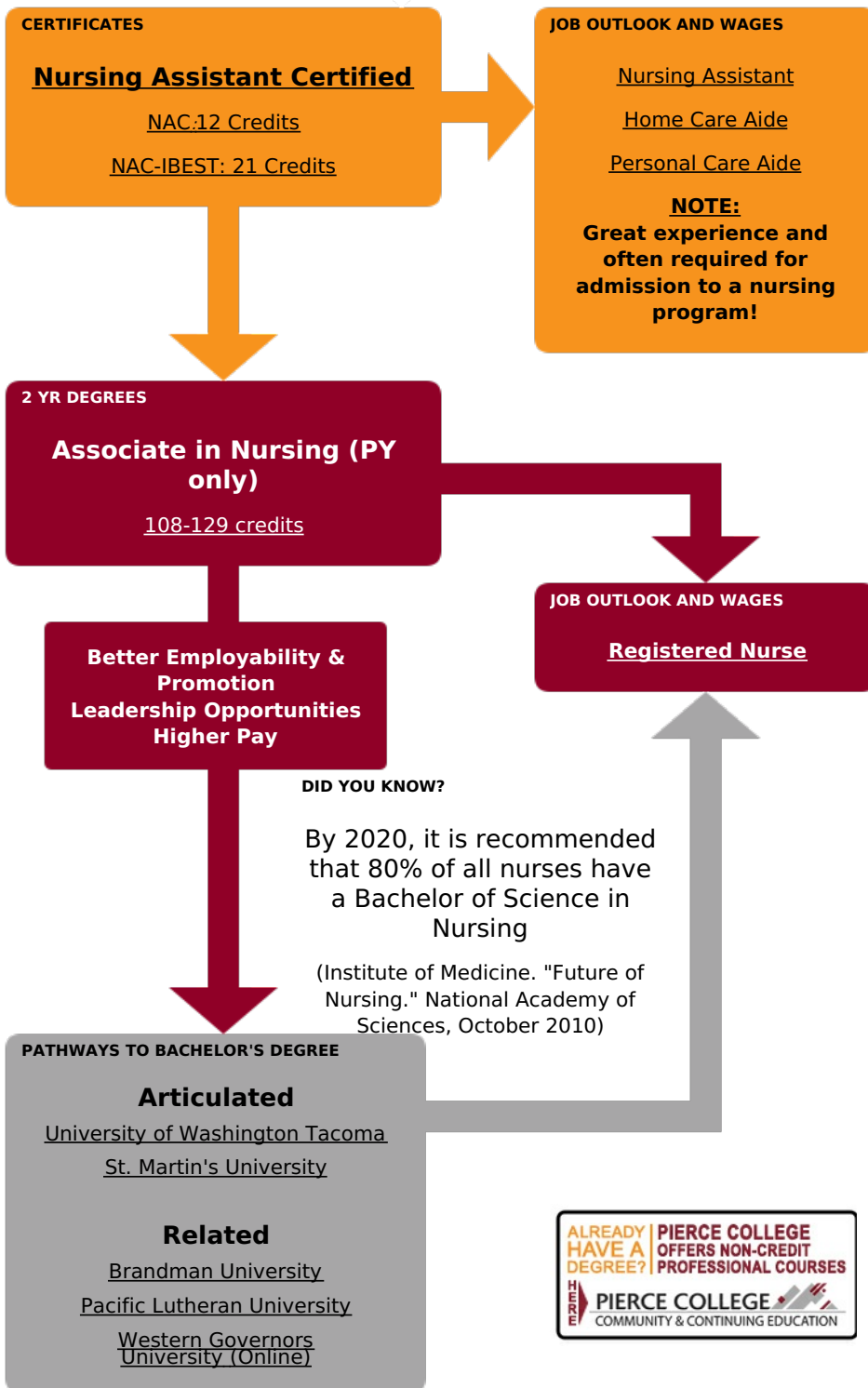


NURSING

Eustenia (Stania) Kasjan, M.A.
 Allied Health Manager
 Nursing/Advising
 253-840-8355

SPECIAL PROGRAM REQUIREMENTS

Background/disqualifying factors



CAREER EXPLORATION & EMPLOYMENT

What can I do in this career field?

O*NET OnLine

Is this career field right for me?



Will this career field meet the needs of my family?



Receive support from:

Job and Career Connections Office

to access and use:



PROFESSIONAL RESOURCES:



[Nursing Scholarships Student
Nurse Association](#)

[Education Information
NCLEX Pass Rates](#)

**RELATED
PROGRAMS:**

**Pre-Nursing
(DTA/MRP)**

**Emergency
Medical
Services**

Kinesiology

**Physical
Therapist
Assistant**

**Dental
Hygiene**

PLEASE SEND COMMENTS OR CORRECTIONS TO:

[Roadmap Helpdesk](#)

Non-Discrimination Policy: *The Pierce College District does not discriminate on the basis of race, color, creed, religion, national origin, sex, sexual orientation, age, gender, marital status, disability, or status as a disabled or Vietnam era veteran.*

BROUGHT TO YOU BY:

