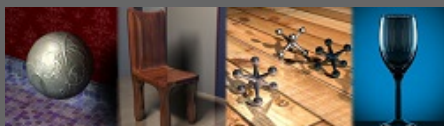


[Go to Pierce Career Roadmaps Home](#)



3-D images courtesy of Lucia Kush, Jessica Delzer, Evan Loucks, and Morgan Kim

DIGITAL DESIGN

[Program Details](#)

[Program Outcomes](#)

Brian Martin  
Program Coordinator

START HERE:

- [Enrollment prep](#)
- [Admissions](#)
- [High school options](#)
- [Tuition & fees](#)
- [Active duty military](#)
- [Veterans](#)
- [Workforce retraining](#)
- [IBEST](#)

**[Not sure where to start?](#)**



**CAREER EXPLORATION & EMPLOYMENT**

What can I do in this career field?



Is this a growing career field in WA?



Is this career field right for me?



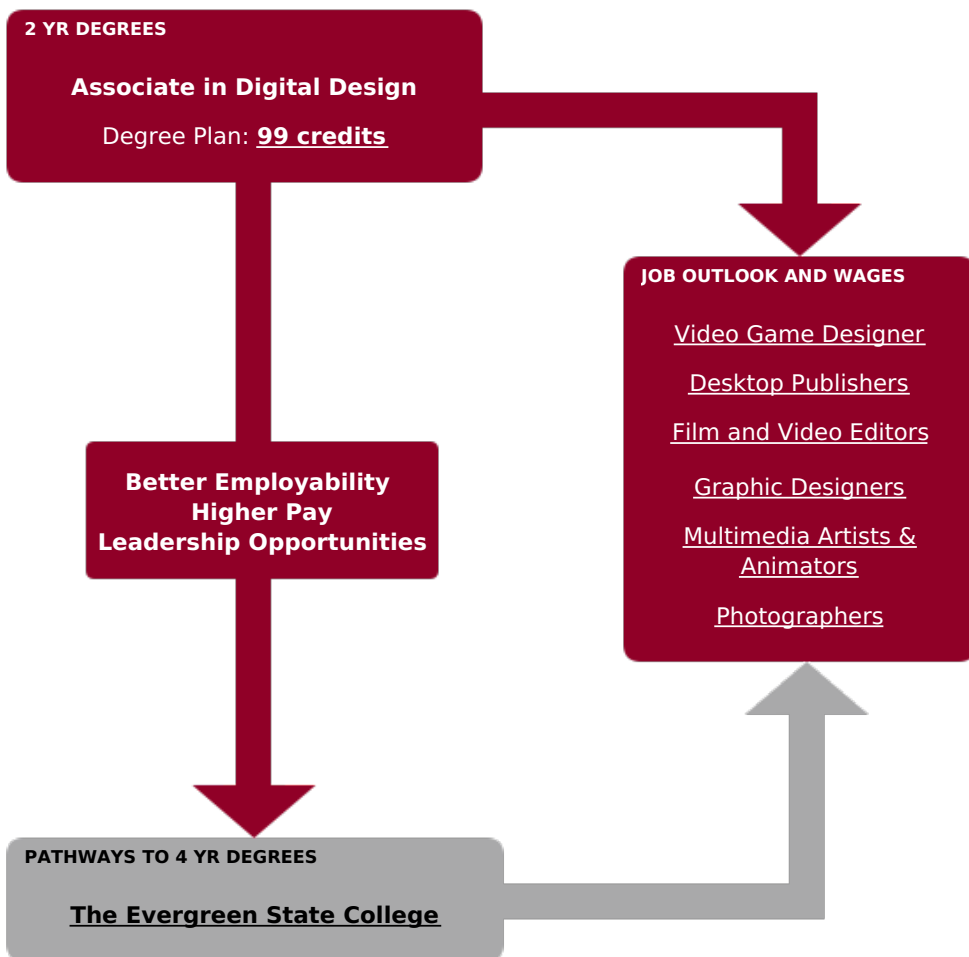
Will this career field meet the needs of my family?



Receive support from:

**[Job and Career Connections Office](#)**

to access and use:



---

**RELATED PROGRAMS**

**Computer Information Systems**

**Computer Network Engineer**

**Computer Science (DTA/MRP)**

---

PLEASE SEND COMMENTS OR CORRECTIONS TO:

**Roadmap Helpdesk**

***Non-Discrimination Policy:*** *The Pierce College District does not discriminate on the basis of race, color, creed, religion, national origin, sex, sexual orientation, age, gender, marital status, disability, or status as a disabled or Vietnam era veteran.*

BROUGHT TO YOU BY:

