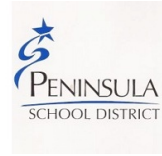


*Design & Pre-Construction Pathway:*

[Go to PSD Pathways to Pierce Home](#)

# Plan ★ Build ★ Manage

Be innovative! This pathway allows you to design and improve products, operate high-tech tools and machinery, analyze problems, come up with creative solutions, and work with both your hands and your mind.



## CAREER EXPLORATION

What can I do in this Career Field?

MY NEXT MOVE

Is this Career Field growing?



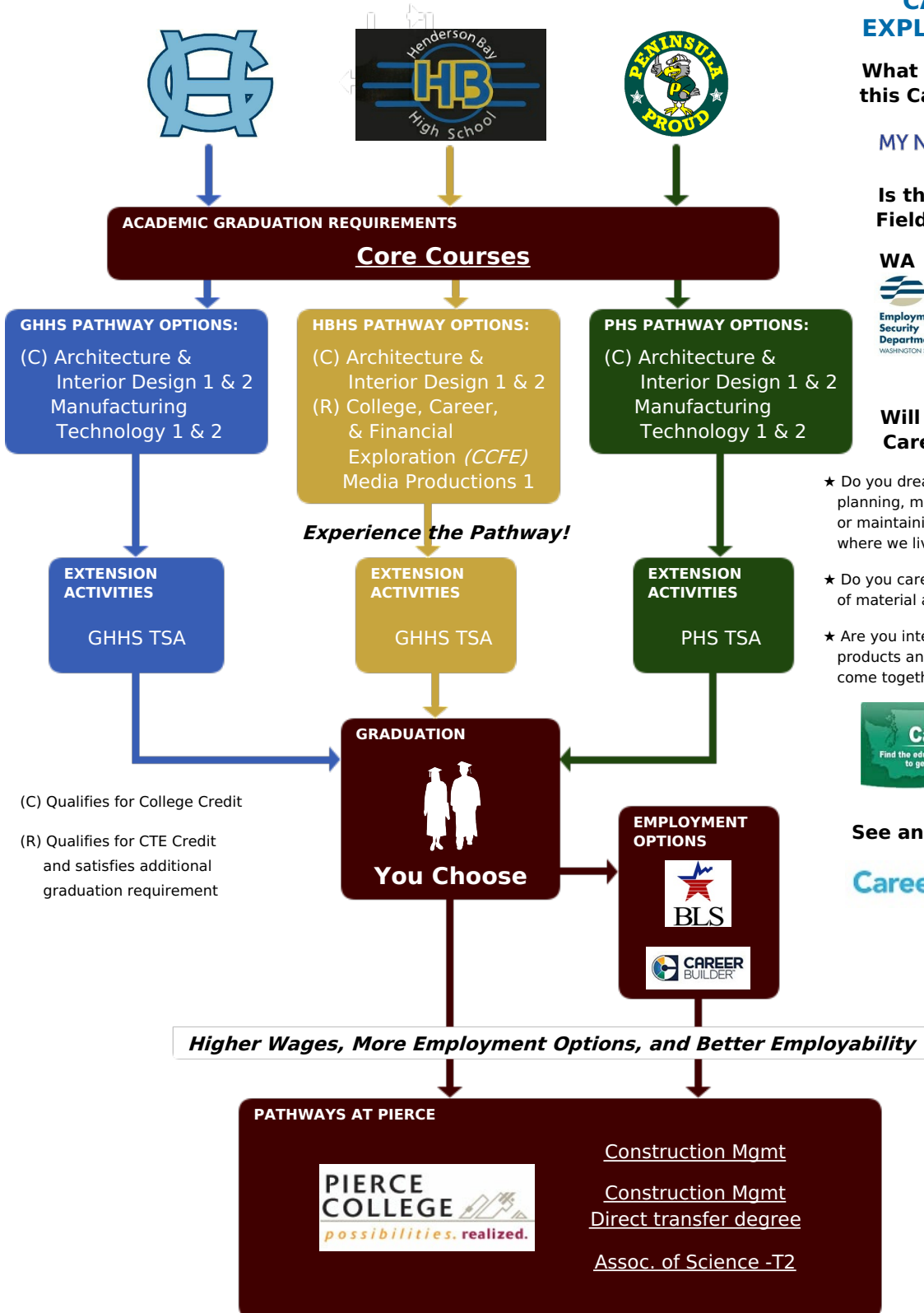
Will I like this Career Field?

- ★ Do you dream of designing, planning, managing, building or maintaining the structures where we live, work and play?
- ★ Do you care about the quality of material and of workmanship?
- ★ Are you interested in how products and machines come together?



See an Advisor for:

Career Cruising



(C) Qualifies for College Credit

(R) Qualifies for CTE Credit and satisfies additional graduation requirement

PLEASE SEND COMMENTS OR CORRECTIONS TO:  
**Roadmap Helpdesk** *Last Update: 5/2016*

BROUGHT TO YOU BY:

